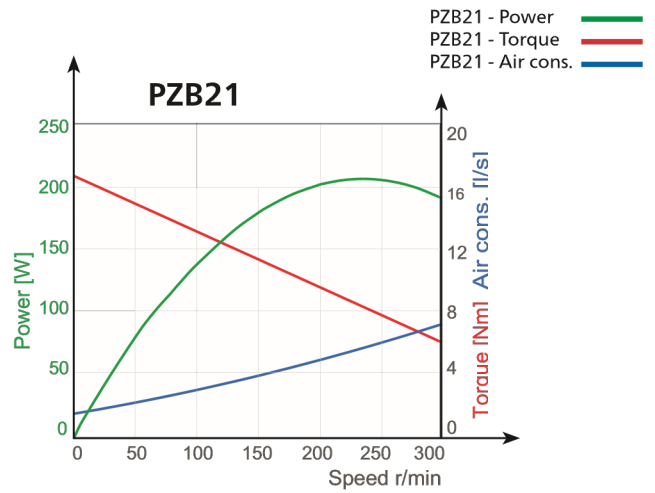
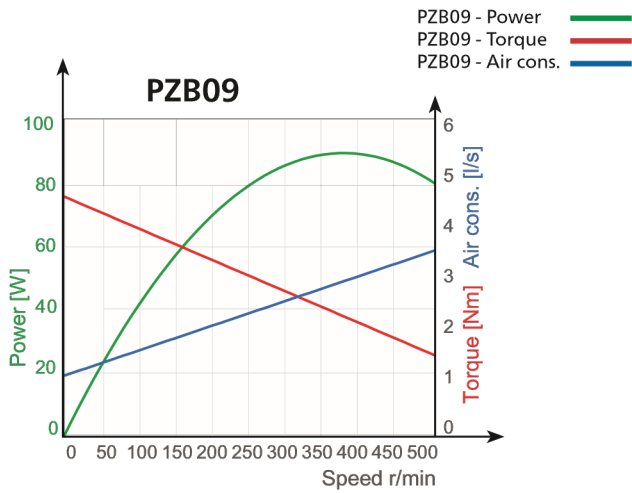


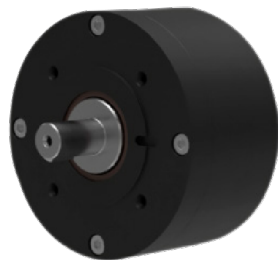
# Performance data



Speed r/min	Power Kw (hp)	Torque Nm (ft-Lb)	Air cons. l/s (cfm)
100	0.04 (0.05)	4 (3)	1.6 (3.4)
200	0.07 (0.09)	3.4 (2.5)	2.1 (4.4)
300	0.08 (0.11)	2.75 (2)	2.5 (5.2)
400	0.09 (0.12)	2.1 (1.6)	3 (6.3)

Speed r/min	Power Kw (hp)	Torque Nm (ft-Lb)	Air cons. l/s (cfm)
50	0.08 (0.1)	15 (11)	2.3 (4.9)
150	0.18 (0.24)	11.8 (8.7)	4 (8.5)
250	0.21 (0.28)	8.3 (6.1)	6 (12.7)
300	0.2 (0.27)	7 (5.2)	7.4 (15.7)

## Models

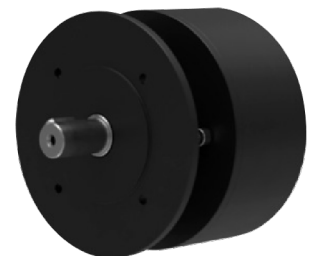


### Compact

Model	Ordering No.
PZB09-L-AR500-11	8411 4090 00
PZB21-L-AR300-11	8411 4210 00

### IEC-FF115/IEC-FF215

Model	Ordering No.
PZB09-L-AR500-20	8411 4090 18
PZB21-L-AR300-20	8411 4210 18



### Nema 56C

Model	Ordering No.
PZB09-L-AR500-21	8411 4090 26
PZB21-L-AR300-21	8411 4210 26

### Bearing flange

Model	Ordering No.
PZB09-LE-AR 500-20	8411 4090 34
PZB21-LE-AR 500-20	8411 4210 34